

Flute 1

# Trio Sonata in G 1039

(♩ = 170)

Fl.1

*mf*

4

9

12

16

20

*cresc.*-----

24

*f* *p*

27

*cresc.*-----

31

# Flute 1

37



41



45



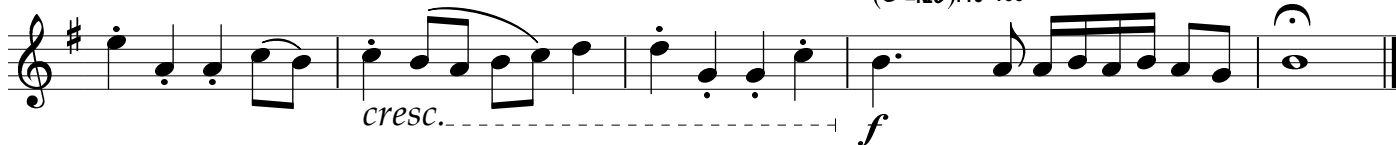
48



53



57



Flute 2

# Trio Sonata in G 1039

(♩ = 170)

Fl. 2

4

9

13

17

20

25

29

32

*mf*

*cresc.* *f*

*p* *cresc.*

*f* *p* *f* *p*

# Flute 2

37



43



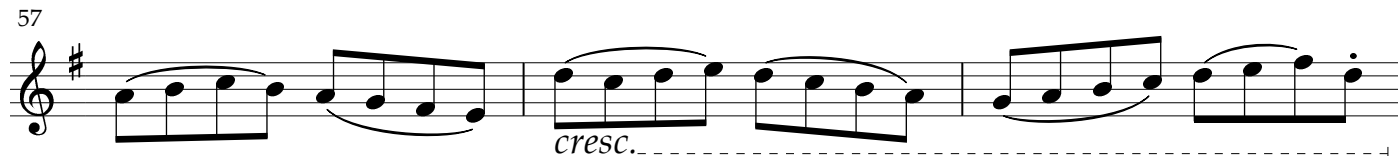
49



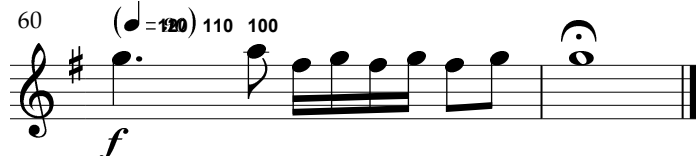
53



57



60



Flute 3

# Trio Sonata in G 1039

(♩ = 170)

Fl. 3 in C

4

9

14

20

25

32

39

45

*mf*

*cresc.*.....

*f*

*f* *p*

*f* *p*

Flute 3

51

*f*

57

(♩ = 120) 110 100

*cresc.*

Cello

# Trio Sonata in G 1039

(♩ = 170)

Cell. *mf*

5

10

15

20 *cresc.*..... *f*

25 *f* *p* *cresc.*..... *f* *p*

32

36

39

# Cello

42

42

46

46

51

51

*f*

56

56

*cresc.*

*f*

(♩ = 90)  
120 110 100