

Flute

White Christmas

Irving Berlin

♩ = 96
Tbn.

mf 2 *mf* 2

7 *mp* **A** 6

17 *mp* 6 *mp*

27 **B** *p* *mp*

34 **C** 2 *f* 3 *mp* rit. ♩ = 94

41 *pp* **D** 3 *rit.* ♩ = 90
Slower

48 *mp* *mf*

Oboe

White Christmas

Irving Berlin

• = 96
Tbn.

mf

2

mf

3

2

7

mp

A

6

mp

18

mf

24

mp

B

p

30

mp

C

2

38

f

3

mp

rit.

2

pp

45

D

3

rit.

mf

mp

mf

Clarinet

White Christmas

Irving Berlin

♩ = 96
Tbn.

mf 2 *mf* 2

7 *mp* **A** 6

17 *mp* 2 *mf*

22 *mp* *mp* *p* **B**

28 *mp*

35 **C** 2 *f* 3 *mp* ♩ = 94

41 ♩ = 90 *p* *pp* **D** 3

Clarinet

47

The musical notation for the Clarinet part consists of three measures. Measure 47 begins with a dynamic marking of *mf* and a *rit.* (ritardando) instruction. It contains a quarter rest followed by a quarter note G4 and a quarter note F4. Measure 48 starts with a dynamic marking of *mp* and contains a quarter rest, followed by quarter notes G4, F4, E4, and D4. Measure 49 ends with a dynamic marking of *mf* and contains quarter notes G4, F4, E4, and D4. The piece concludes with a double bar line.

Solo Clarinet

White Christmas

Irving Berlin

$\bullet = 96$
Tbn.

mf *mp*

8 **A** 2 3 *f* *f*

16 *mp* *mf*

23 **B** 7 **C** *f*

36 $\bullet = 94$ 2 $\bullet = 90$ *ff* *p*

43 **D** *mf* *ff* rit.

Alto Sax

White Christmas

Irving Berlin

♩ = 96
Tbn.

mf

2

rit

mp

7

mp

A

2

13

mf *mp* *mf* *mp*

20

mp *p*

B

mp *mf*

3

3

32

f *mp* *mp*

C

38

♩ = 94

♩ = 90

mf *mp* *p* *pp*

3

Alto Sax

45 **D**

Musical notation for Alto Saxophone, measures 45-48. The notation is on a single staff with a treble clef. Measure 45 starts with a quarter rest, followed by a quarter note G4, a quarter note A4, and a quarter note B4. Measure 46 contains a triplet of eighth notes: G4, A4, and B4. Measure 47 begins with a quarter rest, followed by a quarter note Bb4, a quarter note A4, and a quarter note G4. Measure 48 features a half note G4, a quarter note A4, and a quarter note B4. Dynamics are indicated as *mp* for measures 45 and 48, and *mf* for measures 46 and 47. A *rit.* (ritardando) marking is placed above the first measure of measure 47. A slur covers the notes in measure 48.

Trumpet Solo

White Christmas

Irving Berlin

♩ = 96

mf

8

2

[A]

f

3

3

16

mp

23

[B]

7

mp

p

f

35

[C]

♩ = 94

2

♩ = 90

3

ff

44

[D]

mf

3

f

rit.

mp

f

mp

mf

rit.

Trumpet

White Christmas

Irving Berlin

$\bullet = 96$
straight mute

8 **A**

16 *mp*

23 **B**

29 *mf* *f* *mp* *f*

35 **C** $\bullet = 94$ $\bullet = 90$ *ff* *f* *p*

43 **D** *pp* *mf* *f* *mp* *rit.*

Trumpet

49



Trombone

White Christmas

Irving Berlin

$\text{♩} = 96$

mf *mp*

7 **A** 2 3 *mp* *mf*

17 *mp*

24 **B** *mp* *p* *mf*

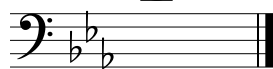
31 **C** *mf* *f* *mp* *mp*

37 $\text{♩} = 94$ $\text{♩} = 90$ *mf* *mp* *p*

43 **D** *pp* *mp* *mf* *mp* *rit.*

Trombone

49



mf

Violin

White Christmas

Irving Berlin

$\bullet = 96$
Tbn.

mf *p* *mf*

6 *p* *mp* **A**

13 *mp* *mf* *mp*

19

25 *p* *mp* **B**

30 *mf* *f* *mp* *mp* **C**

36 *mf* *mf* *p*

$\bullet = 94$ $\bullet = 90$

Violin

43

D

pp *mp* *mf* *mp*

rit. 3 ,

49

mf

Viola

White Christmas

Irving Berlin

$\bullet = 96$
Tbn.

mf *p* *mf*

6 *p* *p* *mp*

14 *mp* *mf* *mp*

22 *mp* *p* *mp*

29 *mf* *f* *mp* *mp*

36 *mf* *mp* *p*

42 *pp* *mp* *mf* *mp*

rit.

Viola

49



mf

Cello

White Christmas

Irving Berlin

$\text{♩} = 96$
Tbn.

mf *p* *mf* *mp* *p*

7 A

mp *mp*

12 *mp* *mf*

18 *mp* *mp*

25 B

mp *p* *mp*

31 C

mf *f* *mp*

37 $\text{♩} = 94$ $\text{♩} = 90$

mp *p* *pp*

Cello

D

45

Musical notation for Cello part, measures 45-48. The key signature has two flats (B-flat and E-flat). Measure 45 starts with a half rest, followed by a quarter note G2, a quarter note F2, and a quarter note E2. A triplet of eighth notes (D2, C2, B1) is marked with a '3' and a bracket. Measure 46 begins with a half rest, followed by a quarter note G2, a quarter note F2, and a quarter note E2. Measure 47 features a half note G2, a half note F2, and a half note E2. Measure 48 contains a half note G2 and a half note F2. Dynamics include *mp* with a hairpin, *mf* with an accent (>), *mp* with a hairpin, and *mf* with an accent (>). A *rit.* marking is placed above the first note of measure 46. A slur covers the notes in measure 47.

Bass

White Christmas

Irving Berlin

♩ = 96
Tbn. arco
mf *p* *mf* *p*

7 pizz. **A**
mp

12 arco
mp *mf*

18 pizz.
mp

25 **B**
mp *mp*

31 arco **C**
mf *f* *mp* *mp*

38 ♩ = 94 ♩ = 90
mf *mp* *p* *pp*

Bass

45 D

mp *mf* *mp* *mf*

rit.

3